

Smart Edu Hub / Smart Exam Resources

9700 / CAIE A level Biology / Paper-1/ Multiple Choice
Questions

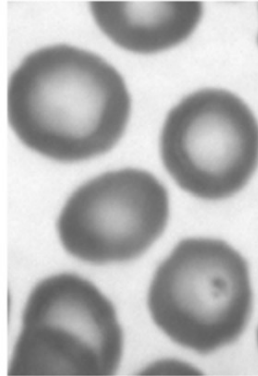
1.2.30-RBC_Lymphocyte-Set-1-qp

Total Questions: 3

Questions

Question 1:

The photograph shows a type of blood cell.



Which statements about these cells are correct?

- 1 Oxygen diffuses through the phospholipid bilayer.
- 2 Sodium ions diffuse through the phospholipid bilayer.
- 3 Water passes in and out of these cells by osmosis.

A 1 and 2 only **B** 1 and 3 only **C** 2 and 3 only **D** 1, 2 and 3

Question 2:

Which process occurs in a mature red blood cell?

- A** active transport
- B** cell division
- C** transcription
- D** translation

Questions (Continued)

Question 3:

An electron micrograph of a cell shows large quantities of rough endoplasmic reticulum and many Golgi bodies.

What type of cell is being viewed?

- A bacterium
- B guard cell
- C lymphocyte
- D mesophyll