

# **Smart Edu Hub / Smart Exam Resources**

9700 / CAIE A level Biology / Paper-1/ Multiple Choice  
Questions

## **1.2.6.0-Endoplasmic-Reticulum-Set-1-qp**

Total Questions: 12

# Questions

## Question 1:

Which part of the cell is often continuous with the rough endoplasmic reticulum?

- A cell surface membrane
- B Golgi apparatus
- C mitochondrion
- D nuclear envelope

## Question 2:

Where would cisternae be found in a cell?

- 1 endoplasmic reticulum
- 2 Golgi apparatus
- 3 mitochondrion

- A 1 and 2      B 1 and 3      C 2 and 3      D 1 only

## Questions (Continued)

### Question 3:

Which cell components contain mRNA?

- 1 chloroplast
- 2 mitochondrion
- 3 nucleus
- 4 rough endoplasmic reticulum

- A 1, 2, 3 and 4
- B 1, 2 and 3 only
- C 2, 3 and 4 only
- D 3 and 4 only

### Question 4:

Which of the cell organelles, when appropriately stained, will be clearly visible under the high power ( $\times 400$ ) of the light microscope?

	lysosomes	endoplasmic reticulum	mitochondria	chloroplasts
A	✓	✓	x	x
B	✓	x	✓	x
C	x	✓	✓	✓
D	x	x	x	✓

key

✓ = visible

x = not visible

## Questions (Continued)

### Question 5:

Membranous sacs containing products of metabolism are formed by the endoplasmic reticulum in cells.

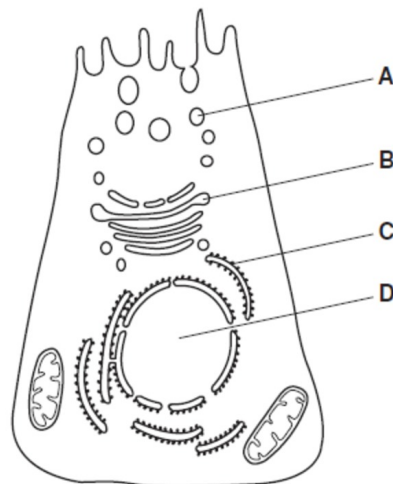
Where are these products used?

- A inside and outside the cell
- B inside lysosomes only
- C inside the cell only
- D outside the cell only

### Question 6:

A cell secreting glycoproteins is supplied with radioactively-labelled glucose which is detected in the cytoplasm first.

In which organelle would radioactively-labelled glucose be detected next?



### Question 7:

Where would cisternae be found in a cell?

- 1 endoplasmic reticulum
- 2 Golgi apparatus
- 3 mitochondrion

- A 1 and 2
- B 1 and 3
- C 2 and 3
- D 1 only

## Questions (Continued)

### Question 8:

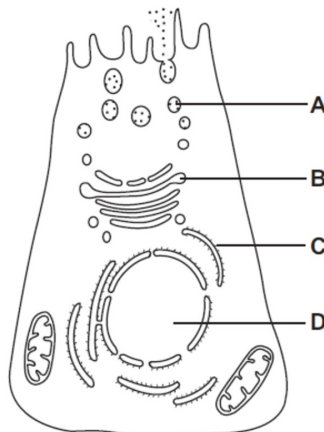
What is a function of the smooth endoplasmic reticulum?

- A antibody synthesis
- B enzyme synthesis
- C protein synthesis
- D steroid synthesis

### Question 9:

The diagram is taken from an electron micrograph of a cell which secretes digestive enzymes.

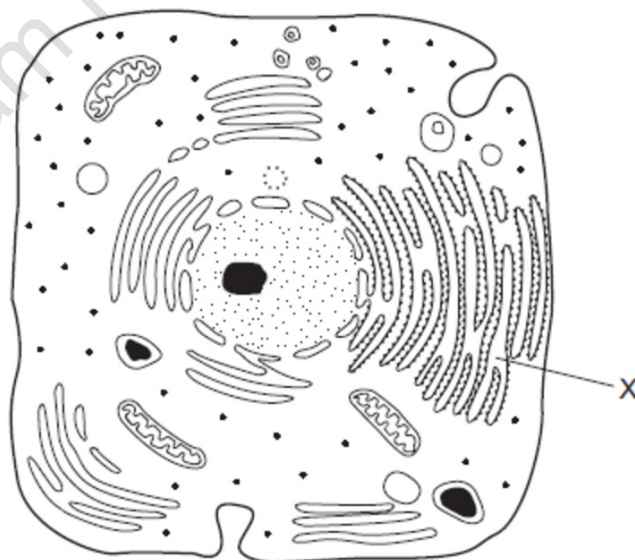
Where are these enzymes made?



## Questions (Continued)

### Question 10:

The diagram is a drawing from an electron micrograph of a typical animal cell.



What is the function of the membrane system labelled X?

- A lipid synthesis only
- B protein synthesis and transport
- C protein synthesis only
- D protein transport only

### Question 11:

Which is correct about the organelles listed in the table?

		carries out transcription	contains enzymes	contains ribosomes
1	lysosomes	no	yes	no
2	mitochondria	yes	no	yes
3	rough endoplasmic reticulum	yes	yes	yes
4	vacuoles	no	yes	no

- A 1 and 3      B 1 and 4      C 2 and 3      D 2 and 4

## Questions (Continued)

### Question 12:

What is a function of the smooth endoplasmic reticulum?

- A protein synthesis
- B protein transport
- C steroid synthesis
- D steroid transport