



MARK SCHEME for the May/June 2010 question paper for the guidance of teachers

9701 CHEMISTRY

9701/41

Paper 4 (A2 Structured Questions), maximum raw mark 100

This mark scheme is published as an aid to teachers and candidates, to indicate the requirements of the examination. It shows the basis on which Examiners were instructed to award marks. It does not indicate the details of the discussions that took place at an Examiners' meeting before marking began, which would have considered the acceptability of alternative answers.

Mark schemes must be read in conjunction with the question papers and the report on the examination.

- CIE will not enter into discussions or correspondence in connection with these mark schemes.

CIE is publishing the mark schemes for the May/June 2010 question papers for most IGCSE, GCE Advanced Level and Advanced Subsidiary Level syllabuses and some Ordinary Level syllabuses.



Page 2	Mark Scheme: Teachers' version	Syllabus	Paper
	GCE AS/A LEVEL – May/June 2010	9701	41

1 (a) P: burns with white / yellow flame *or* copious white smoke / fumes produced (1)



S: burns with blue flame / choking / pungent gas produced (1)



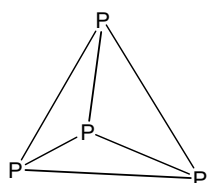
(b) (i) $2 \text{Ca}_3(\text{PO}_4)_2 + 6 \text{SiO}_2 + 10 \text{C} \longrightarrow 1 \text{P}_4 + 6 \text{CaSiO}_3 + 10 \text{CO}$ (2)

(ii)

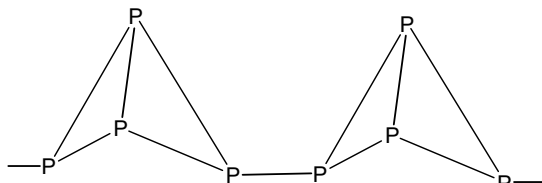
allotrope	type of structure	type of bonding
white	simple / molecular	covalent
red	giant / polymeric	covalent

(4)

(iii)



white P₄ (1)



red P_n (1)

(in each case P has to be trivalent. Many alternatives allowable for the polymeric red P) (2)

(8 max 7) [7]

[Total: 11]

Page 3	Mark Scheme: Teachers' version	Syllabus	Paper
	GCE AS/A LEVEL – May/June 2010	9701	41

- 2 (a) coloured ions / compounds (1)
 variable oxidation states (1)
 formation of complexes (1)
 catalytic activity (4 max 3) [3]
- (b) (green is $[\text{Ni}(\text{H}_2\text{O})_6]^{2+}$)
 ppt is $\text{Ni}(\text{OH})_2$ (1)
 blue solution is $[\text{Ni}(\text{NH}_3)_6]^{2+}$ or $[\text{Ni}(\text{NH}_3)_4]^{2+}$ or $[\text{Ni}(\text{NH}_3)_4(\text{H}_2\text{O})_2]^{2+}$ (1)
 formed by ligand exchange (1)
 $\text{Ni}^{2+} + 2\text{OH}^- \longrightarrow \text{Ni}(\text{OH})_2$ (1)
 $\text{Ni}(\text{OH})_2 + 6\text{NH}_3 \longrightarrow [\text{Ni}(\text{NH}_3)_6]^{2+} + 2\text{OH}^-$ (1) [4]
 (5 max 4)
- (c) $M_r = 58.7 + 48 + 6 + 28 + 32 = 172.7$ (173) (1)
 $n(\text{Ni}) = 4.00 / 172.7 = 0.0232$ mol (1)
 $\text{mass}(\text{Ni}) = 0.0232 \times 58.7 = 1.36\text{g}$
 $\text{percentage} = 100 \times 1.36 / 3.4 = 40.0\%$ (1) [3]

[Total: 10]

- 3 (a) PbO_2 decomposed into PbO (and O_2). (SnO_2 is stable) [1]
- (b) (i) PbCl_4 dissociates into Cl_2 and PbCl_2 (white solid)
 or $\text{PbCl}_4 \longrightarrow \text{PbCl}_2 + \text{Cl}_2$ or in words
 (1) (1)
 $\text{Cl}_2 + 2\text{KI} \longrightarrow 2\text{KCl} + \text{I}_2$ (1)
 $E^\circ(\text{Cl}_2/\text{Cl}^-)$ is more positive than $E^\circ(\text{I}_2/\text{I}^-)$ (1)
- (ii) SnCl_4 is more stable than PbCl_4 / answers using E° accepted (1)
 (5 max 4) [4]
- (c) (i) $\begin{array}{c} \text{Cl} \text{ : } \ddot{\text{C}} \text{ : } \text{Cl} \\ + \quad - \end{array}$ or $\text{Cl} \equiv \ddot{\text{C}} - \text{Cl}$ (1)
 bent or non-linear or angle = $100-140^\circ$ (1)
- (ii) $\text{CCl}_2 + \text{H}_2\text{O} \longrightarrow \text{CO} + 2\text{HCl}$ (1) [3]

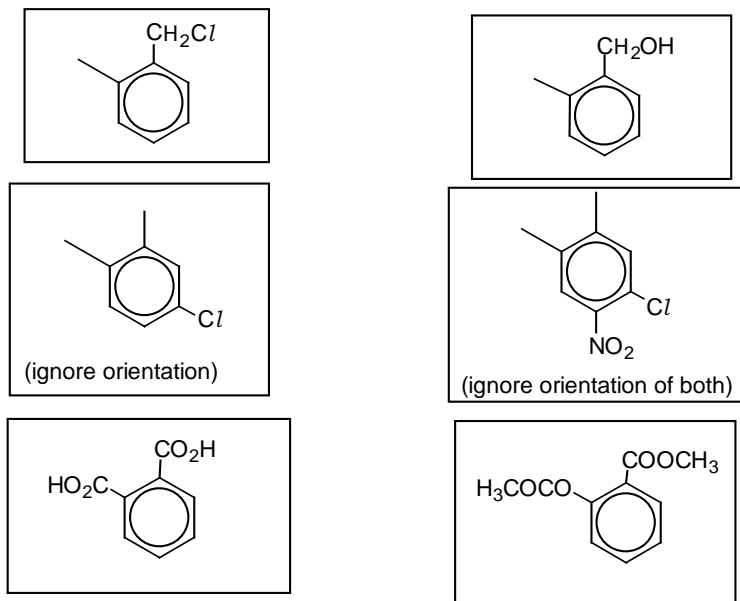
[Total: 8]

Page 4	Mark Scheme: Teachers' version	Syllabus	Paper
	GCE AS/A LEVEL – May/June 2010	9701	41

- 4 (a) hydrogen bonding (1)
- diag: $\text{NH}_2\text{CH}_2\text{CH}_2\text{OH} \cdots \text{OHCH}_2\text{CH}_2\text{NH}_2$ or $\text{NH}_2\text{CH}_2\text{CH}_2\text{OH} \cdots \text{NH}_2\text{CH}_2\text{CH}_2\text{OH}$
(i.e. H-bond from OH group to either OH or NH_2) (1) [2]
- (b) propylamine is more basic than phenylamine (1)
because lone pair on N is delocalised over ring in phenylamine (so less available for protonation)
or the propyl group is electron-donating, so the lone pair is more available (1) [2]
- (c) $\text{HOCH}_2\text{CH}_2\text{NH}_2 + \text{H}^+ \longrightarrow \text{HOCH}_2\text{CH}_2\text{NH}_3^+$
or $\text{HOCH}_2\text{CH}_2\text{NH}_2 + \text{HCl} \longrightarrow \text{HOCH}_2\text{CH}_2\text{NH}_3^+\text{Cl}^-$
or $\text{HOCH}_2\text{CH}_2\text{NH}_2 + \text{H}_2\text{O} \longrightarrow \text{HOCH}_2\text{CH}_2\text{NH}_3^+\text{OH}^-$
(reaction with any acceptable Bronsted acid accepted) [1]
- (d) (i) X is $\text{CH}_3\text{CH}_2\text{CN}$ (1)
- (ii) step 1 is KCN in ethanol, heat [HCN negates] (1)
step 2 is $\text{H}_2 + \text{Ni} / \text{Pt}$ or LiAlH_4 or Na in ethanol [NOT NaBH_4 or Sn/HCl] (1) [3]
- (e) ethanolamine:
Na effervescence / bubbles produced
or $\text{Cr}_2\text{O}_7^{2-} / \text{H}^+$ colour turns from orange to green
or $\text{MnO}_4^- / \text{H}^+$ purple colour disappears
or $\text{PCl}_3 / \text{PCl}_5 / \text{SOCl}_2$ (1) steamy fumes (1)
- phenylamine:
 $\text{Br}_2(\text{aq})$ decolourises / white ppt formed
or $\text{HNO}_2 / \text{H}^+$ at $T < 10^\circ\text{C}$, then phenol in NaOH (1) coloured dye formed (1) [4]

[Total: 12]

7



[6]

[Total: 6]

8 (a)

Block letter	Identity of compound
J	Deoxyribose (NOT “sugar” or “pentose”)
K	Guanine
L	Phosphate
M	Thymine

All 4 correct score 3 marks, 3 score 2, 2 score 1

[3]

(b) hydrogen bonds (1) between the bases (1)

[2]

- (c)
- 1 RNA is a single strand; DNA is double strand
 - 2 RNA contains ribose; DNA contains deoxyribose
 - 3 RNA contains uracil; DNA contains thymine
 - 4 RNA is shorter than DNA

(1)

(1)

(1)

(1)

(4 max 3) [3]

(d) mRNA – copies the DNA gene sequence
or forms a template for a particular polypeptide / in protein synthesis

(1)

tRNA – carries amino acids to the ribosome

(1)

[2]

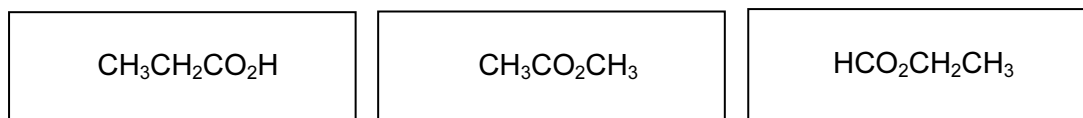
[Total: 10]

Page 7	Mark Scheme: Teachers' version	Syllabus	Paper
	GCE AS/A LEVEL – May/June 2010	9701	41

- 9 (a) spinning proton produces two spin states / magnetic moments (1)
these can align with or against an applied magnetic field (1) [2]

- (b) field experienced by protons is influenced by adjacent atoms / protons are in two different chemical environments (1)
peaks are in the area ratio 3 : 1 (methyl to –OH protons) (1)
or are at 0.5 – 6.0δ and 3.3 – 4.0δ (1) [2]

(c) (i)



propanoic acid

methyl ethanoate

ethyl methanoate

all for (2) two for (1)

- (ii) compound is $\text{CH}_3\text{CO}_2\text{CH}_3$ or methyl ethanoate (1)
the other two compounds each have 3 different proton environments, but the spectrum shows only 2 peaks. (1)

A is OCH_3 , B is CH_3CO (1)

- (iii) compound – propanoic acid or ethyl methanoate (1)
the –OH proton or the H–CO proton (1) [6]

- (d) (i) distance between atoms / bond lengths / bond angles (1)

- (ii) hydrogen atoms (1) [2]

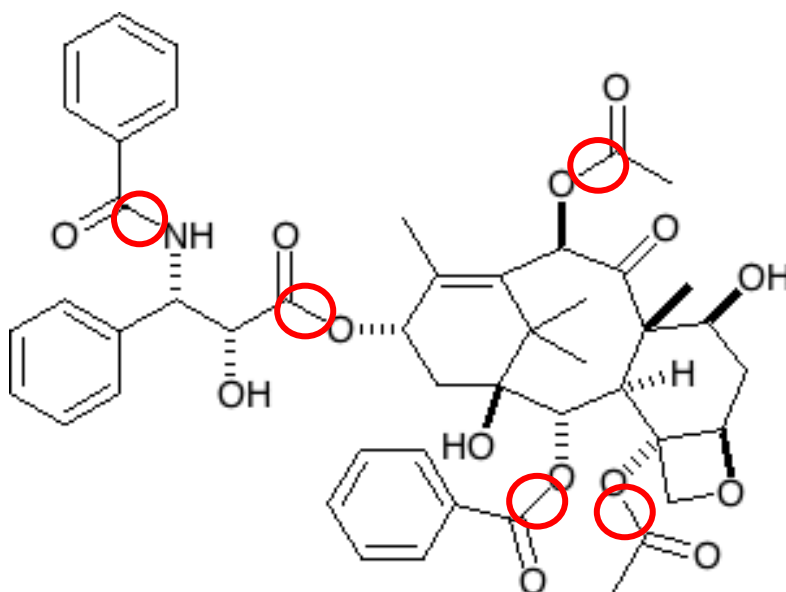
[Total: 12 max 10]

[Total: 10]

Page 8	Mark Scheme: Teachers' version	Syllabus	Paper
	GCE AS/A LEVEL – May/June 2010	9701	41

10 (a) ester or amide (allow nitrile) [1]

(b)



amide (1) + any one ester (1)
allow whole groups circled

[2]

(c) (i) hydrophilic drug at **C** (1)
hydrophobic drug at **B** both needed (1)

(ii) (at **A**) the drug would be exposed to attack / breakdown / digestion (1) [3]

(d) (i) at one of the –OH groups (1)

(ii) volume of sphere can be large *or* one PEG molecule can only carry 1 or 2 drug molecules (1)
or can carry different types of drug [2]

(e) more economic (1)
less chance of side-effects / side effects reduced / less chance of allergic reaction (1)
less risk of harming healthy tissue / organs / less chance of an overdose (1)

(3 max 2) [2]

[Total: 10]